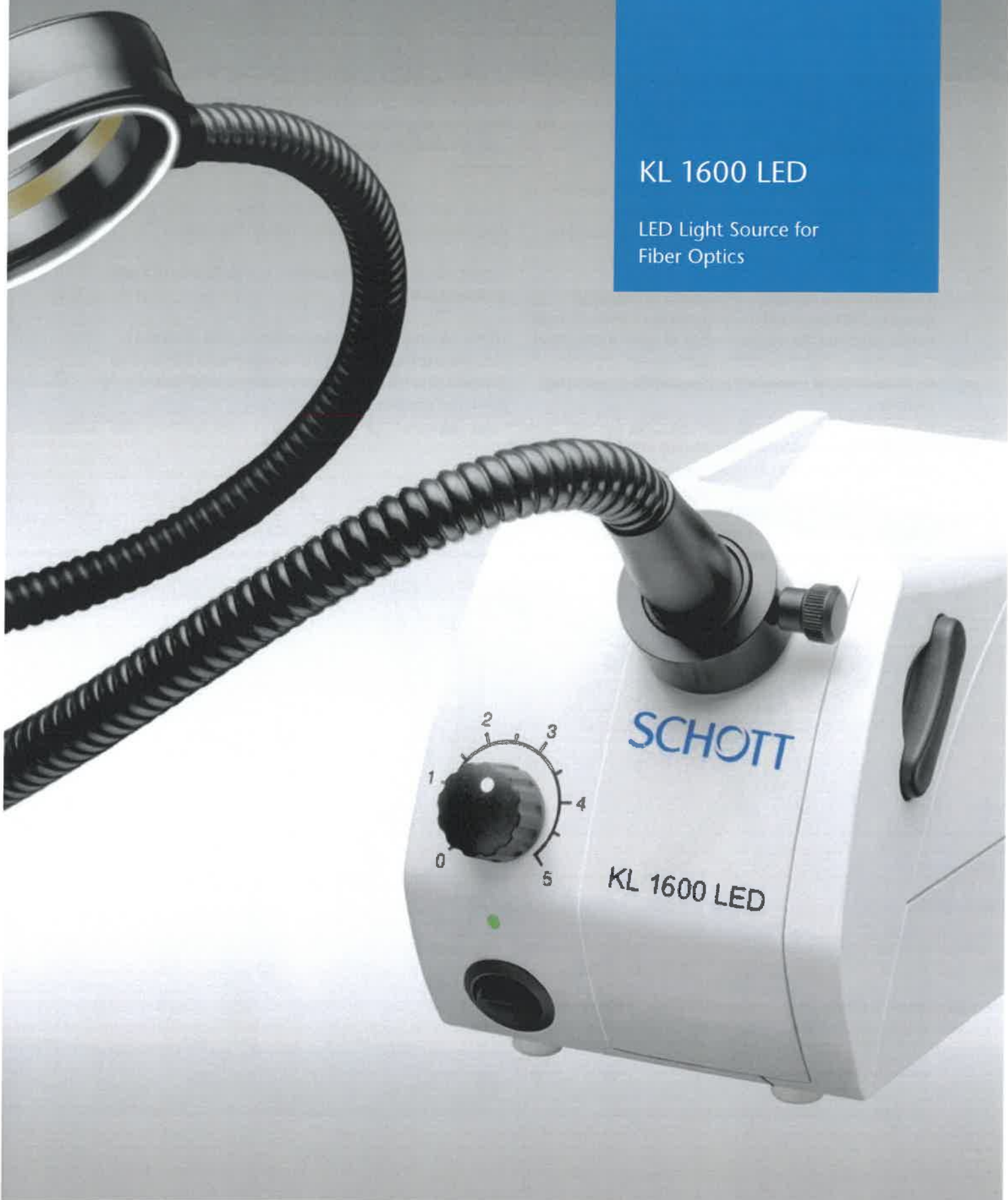


**SCHOTT**  
glass made of ideas

## KL 1600 LED

LED Light Source for  
Fiber Optics



## KL 1600 LED

### LED Light Source for Fiber Optics

The KL 1600 LED is an innovative fiber optic light source which uses cold light to illuminate all types of objects in industrial and life science applications. It is a benchmark in the field of LED light sources.

Employing state-of-the-art technology, SCHOTT has developed and designed a multiple LED driven light source to provide an attractive alternative to conventional halogene cold light sources.

The brightness is improved compared to its forerunner model by 70% and therefore optimized as a standard illumination system for the requirements of all stereo microscopes.

An optimized heat management is assured by an extremely silent fan.

The LEDs have an extremely long lifetime of at least 50,000 hours. That means users do never have to change bulbs which reduces the costs of ownership and avoids service and downtime costs. Due to 80% lower energy consumption of LED light sources compared to conventional halogene light sources there is additional potential to save money.

Emitting neutral white light (approx. 5,600 K) the KL 1600 LED is DC driven. The ripple free illumination is perfect for digital imaging applications. An additional benefit is that the color temperature does not change when the light source is dimmed.

The KL 1600 LED combines all advantages of LED light with the advantages of illumination through fiber optics:

Significantly higher light intensities can be focused to a very small field of view.

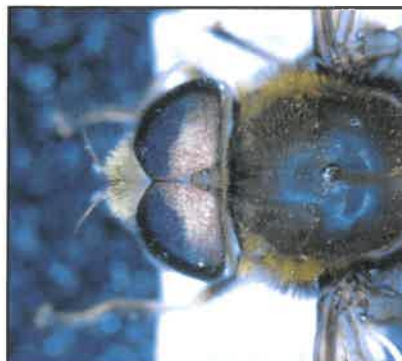
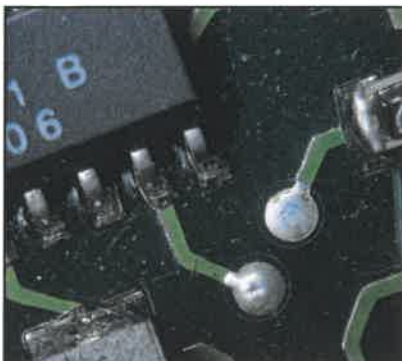
Further all kinds of light guides of the KL 1500 series can be connected to the KL 1600 LED. That allows the full flexibility to realize all common illumination techniques and all existing inspection processes remain valid.





## KL 1600 LED

- Fiber optic cold light source with multiple LED light engine
- Brightness is equivalent to a 150-watt halogene cold light source (650 lumens out of a Ø 9 mm fiber bundle)
- Compact housing with small footprint and additional iron ballast for stability when used with goosenecks
- Continuous dimming (0 – 100 %) with separate on/off switch
- Silent fan cooling
- Wide-range power supply (90 – 264 V, 47 – 63 Hz)
- Filter slider with two positions
- Outstanding price performance ratio



Lighting and Imaging

SCHOTT AG

Otto-Schott-Strasse 2

55127 Mainz

Germany

Phone: +49(0)6131/66-7796

Fax: +49(0)6131/66-7850

[lightingimaging@schott.com](mailto:lightingimaging@schott.com)

[www.schott.com/lightingimaging](http://www.schott.com/lightingimaging)

For your local sales contact please visit

[www.schott.com/lightingimaging/  
english/contact](http://www.schott.com/lightingimaging/english/contact)

**M**ICRO  
MECANIQUE  
MICROSCOPES Toutes marques  
Parc Pereire- Bât. EH  
101, Rue Pereire  
78105 SAINT GERMAIN EN LAYE  
Tél : 01.60.78.68.78 - Fax : 01.60.78.14.70  
[sav@micromecanique.fr](mailto:sav@micromecanique.fr)