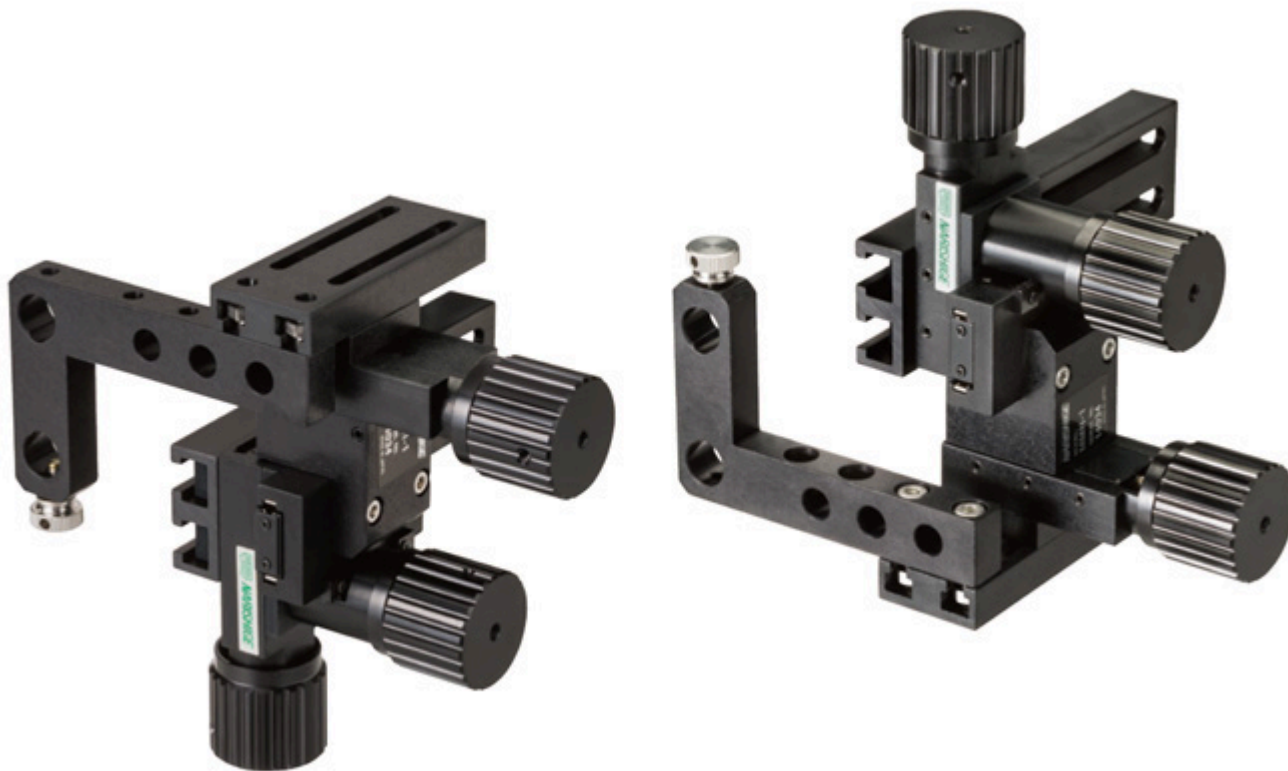


MMN-1

Coarse Manipulator

For installation of a hydraulic micromanipulator; MHW-103.

The MMN-1 manual coarse manipulator is designed for use in combination with the MHW-103 for patch clamping. In addition to responsive manual operation, different combinations of components enable a variety of installations.




Specification


Accessory included		Screw Hex Wrench
Movement range	Coarse	X30mm, Y30mm, Z30mm
Dimensions/Weight		W130 × D130 × H118mm, 530g


* For attachment to the microscope, an illumination pillar mounting adaptor and a mounting adaptor (NR / NR2) are required (sold separately).

System Diagram



 refers to the model itself with standard attachments

 refers to attachable main accessories

 refers to types of mounting adaptors

Specifications are subject to change without notice.

Copyright © NARISHIGE Group. All Rights Reserved. 1999-2025